

# CLASSIC PATTERNS

## FISSURED PANELS



USG Radar™ Basic R2120

TO ORDER SAMPLES, GO TO [USG.COM](http://USG.COM)

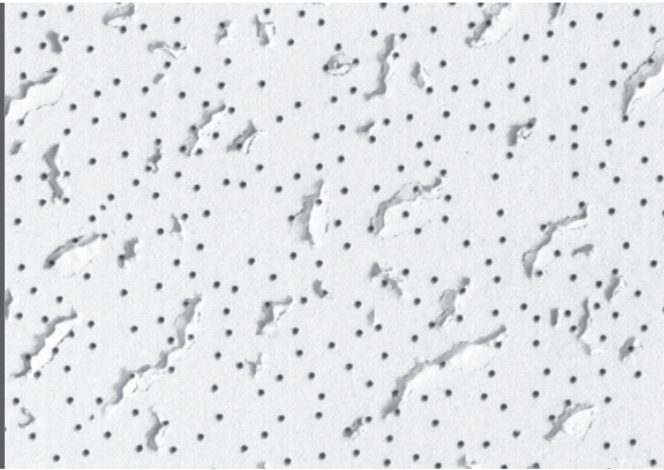
**AVAILABLE COLORS\***



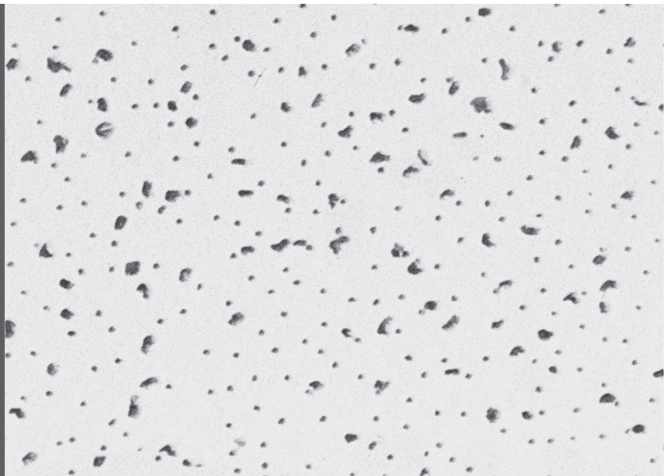
Flat Black

\*Available on Radar R2210 & R2410

USG Fifth Avenue™



USG Radar™ & USG Radar™ Basic



**FEATURES AND BENEFITS**

- Match many existing panels.
- Good sound control for a variety of commercial environments.
- USG Fifth Avenue™ panels feature a directional pattern.
- USG Radar™ panels are nondirectional for even easier installation.

**SUBSTRATE**

- Wet-formed mineral fiber

# PRODUCT SPECIFICATIONS

Pattern

USG FIFTH AVENUE™

USG RADAR™ BASIC

USG RADAR™

| Item No.           | Edge | Panel Size   | Pcs./Carton | Sq. Ft./Carton | Ctns./Pallet | Fire Rating | Sound Control |     | Technical Information |         |     |                               |                  |                           |
|--------------------|------|--------------|-------------|----------------|--------------|-------------|---------------|-----|-----------------------|---------|-----|-------------------------------|------------------|---------------------------|
|                    |      |              |             |                |              |             | NRC           | CAC | LR                    | R-Value | VOC | Mold, Mildew & Sag Resistance | Recycled Content | USG Commercial Equivalent |
| 133                | SQ   | 2'x2'x5/8"   | 16          | 64             | 20           | Class A     | 0.55          | 35  | 0.81                  | 1.4     | Low | —                             | 25%              | USG Fissured™ Basic 560   |
|                    | SQ   | 2'x4'x5/8"   | 8           | 64             | 18           | Class A     | 0.55          | 35  | 0.81                  | 1.6     | Low | —                             | 48-51%           | USG Fissured™ Basic 586   |
|                    | SLT  | 2'x2'x5/8"   | 16          | 64             | 20           | Class A     | 0.55          | 33  | 0.81                  | 1.4     | Low | —                             | 25%              | USG Fissured™ Basic 506   |
|                    | SQ   | 2'x4'x5/8"   | 8           | 64             | 20           | Class A     | 0.55          | 35  | 0.81                  | 1.4     | Low | —                             | 25%              | USG Fissured™ Basic 562   |
|                    | SQ   | 2'x2'x5/8"   | 16          | 64             | 16           | Class A     | 0.55          | 35  | 0.81                  | 1.6     | Low | —                             | 48-51%           | USG Fissured™ Basic 585   |
| R2110              | SQ   | 2'x2'x5/8"   | 16          | 64             | 20           | Class A     | 0.55          | 33  | 0.83                  | 1.4     | Low | —                             | 25%              | USG Radar™ Basic 2110     |
| R2115              | SQ   | 2'x2'x5/8"   | 16          | 64             | 20           | Class A     | 0.55          | 35  | 0.83                  | 1.6     | Low | —                             | 48-51%           | USG Radar™ Basic 2115     |
| R2120              | SLT  | 2'x2'x5/8"   | 16          | 64             | 20           | Class A     | 0.55          | 33  | 0.83                  | 1.4     | Low | —                             | 25%              | USG Radar™ Basic 2120     |
| R2130              | FLB  | 2'x2'x5/8"   | 16          | 64             | 16           | Class A     | 0.55          | 33  | 0.83                  | 1.4     | Low | —                             | 25%              | USG Radar™ Basic 2130     |
| R2310              | SQ   | 2'x4'x5/8"   | 8           | 64             | 20           | Class A     | 0.55          | 35  | 0.83                  | 1.4     | Low | —                             | 25%              | USG Radar™ Basic 2310     |
| R2315              | SQ   | 2'x4'x5/8"   | 8           | 64             | 18           | Class A     | 0.55          | 35  | 0.83                  | 1.6     | Low | —                             | 48-51%           | USG Radar™ Basic 2315     |
| R2210 <sup>1</sup> | SQ   | 2'x2'x5/8"   | 16          | 64             | 20           | Class A     | 0.55          | 33  | 0.84                  | 1.4     | Low | —                             | 25-34%           | USG Radar™ 2210           |
| R2220              | SLT  | 2'x2'x5/8"   | 16          | 64             | 20           | Class A     | 0.55          | 33  | 0.84                  | 1.4     | Low | —                             | 25-34%           | USG Radar™ 2220           |
| R2225              | SLT  | 2'x2'x5/8"   | 16          | 64             | 16           | Class A     | 0.55          | 35  | 0.84                  | 1.6     | Low | —                             | 51-59%           | USG Radar™ 2225           |
| R2230              | FLB  | 2'x2'x5/8"   | 16          | 64             | 20           | Class A     | 0.55          | 33  | 0.84                  | 1.4     | Low | —                             | 26-34%           | USG Radar™ 2230           |
| R2410 <sup>1</sup> | SQ   | 2'x4'x5/8"   | 8           | 64             | 20           | Class A     | 0.55          | 35  | 0.84                  | 1.4     | Low | —                             | 25-34%           | USG Radar™ 2410           |
| R2415              | SQ   | 2'x4'x5/8"   | 8           | 64             | 18           | Class A     | 0.55          | 35  | 0.84                  | 1.6     | Low | —                             | 48-51%           | USG Radar™ 2415           |
| R2570 <sup>2</sup> | SF   | 12"x12"x5/8" | 48          | 48             | 18           | Class A     | 0.45          | 35  | 0.84                  | 1.4     | Low | —                             | 34-44%           | USG Radar™ 2570           |

**Low Emissions (VOC)**  
 Third party (GREENGUARD Gold) certified for low-emitting performance, meets California Department of Public Health's (CDPH) Standard Method v1.1 - 2010 (CA Section 01350). Certificates of Compliance for Low VOC Emissions are available on usg.com and at productguide.ulenvironment.com

**ClimaPlus™ Warranty Performance**  
 Contains a broad-spectrum antimicrobial additive on the face and back of the panel that provides resistance against the growth of mold and mildew. Includes sag-resistance performance.

**High Recycled Content**  
 Classified as containing greater than 50% total recycled content. Total recycled content is based on product composition of postconsumer and preconsumer (postindustrial) recycled content per FTC guidelines.

**Firecode®**



This product has achieved both BioPreferred initiatives: Federal Procurement Preference and Certified Product Labeling. See the complete list of all USG ceiling panels on biopreferred.gov website.



GREENGUARD Gold Certification offers stricter certification criteria, considers safety factors to account for sensitive individuals (such as children and the elderly), and ensures a product is acceptable for use in environments such as schools and healthcare facilities. It is referenced by both The Collaborative for High Performance Schools (CHPS) and the Leadership in Energy and Environmental Design (LEED) Building Rating System.

## FOOTNOTES

**ASTM E84 surface-burning characteristics**  
 Class A  
 Flame Spread: 25 or less  
 Smoke Developed: 50 or less

**Maintenance**  
 Can be cleaned easily with a soft brush or vacuum.

**Notes**  
 1. Available in Flat Black.  
 2. USG 2570 has the option to be installed via staple or adhesive.

Manufactured by USG Interiors, LLC  
 550 West Adams Street  
 Chicago, IL 60661

The trademarks USG, CLIMAPLUS, FIFTH AVENUE, FIRECODE, FISSURED, RADAR, IT'S YOUR WORLD, BUILD IT., THE USG logo, the design elements and colors, and related marks are trademarks of USG Corporation or its affiliates.

Safety First! Follow good safety/industrial hygiene practices during installation. Wear appropriate personal protective equipment. Read SDS and literature before specification and installation.