

USG HERADESIGN™ WOOD WOOL PANELS

LAY-IN CEILING PANELS



USG Heradesign™ Wood Wool Panels/
USG Donn® Brand Acoustical
Suspension System

TO ORDER SAMPLES, GO TO USG.COM OR CGCINC.COM

STANDARD COLOR



Beige

CUSTOM COLOR¹



Panels can
be field
painted

FEATURES AND BENEFITS

- Available in two textures to meet design needs.
- Can be field painted for an almost unlimited range of colors.
- Excellent noise absorption - NRC up to 0.85.
- Durable and sustainable option for retrofits to improve acoustical performance.

APPLICATIONS

- Offices and conference rooms
- Gymnasiums and recreational areas
- Education
- Auditoriums
- Restaurants
- Retail Spaces

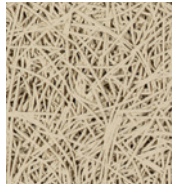
HERADESIGN 1

HERADESIGN 2

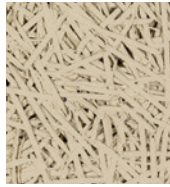
USG HERADESIGN™ WOOD WOOL PANELS


LAY-IN CEILING PANELS

HERADESIGN 1
(Super Fine)



HERADESIGN 2
(Fine)



Edge	Panel Size	Fire Rating	Item No.	Color
				
SQ	2'x2'x1"	Class A	HLSF1225SQ	Beige
	2'x4'x1"	Class A	HLSF1245SQ	Beige
SL	2'x2'x1"	Class A	HLSF1225SL	Beige
	2'x4'x1"	Class A	HLSF1245SL	Beige
SQ	2'x2'x1"	Class A	HLF1225SQ	Beige
	2'x4'x1"	Class A	HLF1245SQ	Beige
SL	2'x2'x1"	Class A	HLF1225SL	Beige
	2'x4'x1"	Class A	HLF1245SL	Beige

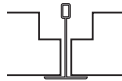
HERADESIGN 1
(Super Fine Texture)

HERADESIGN 2
(Fine Texture)

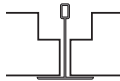
GRID PROFILE OPTIONS

Square Edge Panels - SQ

USG
DX®

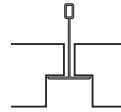


USG
DXW™



Shadowline Edge Panels - SL

USG
DX®



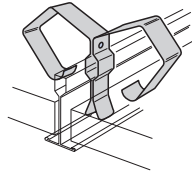
ACOUSTICAL PERFORMANCE²

NRC as per ASTM C423		
	No Infill Panel	Infill Panel; Item No. 22421
HERADESIGN 1	0.55	0.85
HERADESIGN 2	0.55	0.75

USG HERADESIGN™ WOOD WOOL PANELS

LAY-IN CEILING PANELS

Accessories



Panel Retention Clip 20428

Attaches to 1-1/2" main tees and cross tees behind lay-in panels. The retention clip helps prevent panel displacement from incidental contact. Recommended with USG Heradesign panels in areas where contact is possible such as gymnasiums & educational applications.

PHYSICAL DATA

Product literature

Data sheet: SC3259
 Installation Guide: SC3261

ASTM E1264 classification

ASTM E1264-22 Type XIV, Pattern L
 ASTM E1264-23 Type E, Pattern L

ASTM E84 and CAN/ULC S102 surface-burning characteristics

Class A
 Flame spread: 25 or less
 Smoke developed: 50 or less

Online tools

usgdesignstudio.com or
 cgcdesignstudio.com

Maintenance

Can be cleaned easily with a soft brush or vacuum.

Visual Consideration

Color and pattern variation is common across panels due to the natural characteristics of wood.

Field Painting

Field painting multiple times is acceptable with Heradesign. For more detail please see USG Heradesign Installation Guide SC3261.

Weight

HERADESIGN 1
 2.31 lb. / sq. ft. (1")

HERADESIGN 2
 2.53 lb. / sq. ft. (1")

Installation Considerations

Use caution and wear protective clothing and eye protection. Only install in a well ventilated area. For detailed instructions reference USG Heradesign Installation Guide SC2361. Heradesign panels are not recommended for use in pools or exterior applications.

Notes

- Given the potential variation of the wood fibers used in Heradesign panels, USG Standard, Advantage or Premium colors will coordinate only and exact matches are not possible. Please compare samples with USG color chips to find best coordinating color.
- Acoustical test results are representative of 1" thick product.

Notice

The information in this document is subject to change without notice. CGC Inc. or USG Corp. assumes no responsibility for any errors that may inadvertently appear in this document.

SC3259/rev. 10-23

© 2023 USG Corporation and/or its affiliates. All rights reserved. Printed in USA

Manufactured by
 Knauf AMF Ges. m.b.H.
 Ferndorf 29
 9702 Ferndorf, Austria

The trademarks USG, CGC, DONN, DX, DXW, IT'S YOUR WORLD. BUILD IT., the USG and CGC logos, the design elements and colors, and related marks are trademarks of USG Corporation or its affiliates.

HERADESIGN is a trademark of Knauf AMF GmbH & Co. Manufactured by Knauf AMF GmbH in Ferndorf, Austria.

Safety First! Follow good safety/industrial hygiene practices during installation. Wear appropriate personal protective equipment. Read SDS and literature before specification and installation.